

# New Products

## VAPOR METER

Model 580 portable organic vapor meter from Analytical Instrument Development is designed to detect low levels of volatile organic compounds to a minimum level of 0.1 ppm. Applications include on-site analysis to assure OSHA compliance, detection of fugitive emissions and stack monitoring. Contact: Analytical Instrument Development Inc., Route 41 and Newark Road, Avondale, PA 19311.

## MOISTURE ANALYZER

Pneumetrics has introduced a micro-processor-based moisture analyzer designed for process applications. The Moisture-Mark 1 can be used to continuously monitor either gases or liquids. Users can select readouts of dewpoint in Centigrade or Fahrenheit, PPM by volume or weight, or percent relative humidity. Contact: Pneumetrics Inc., 19338 Londelius St., Northridge, CA 91324.

## INGREDIENT INJECTOR

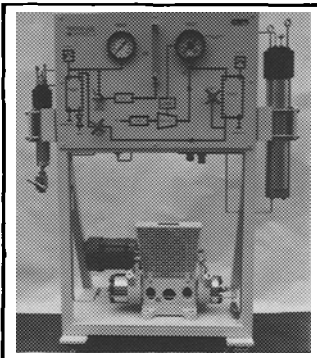
Macawber Engineering offers a multi-capacity ingredient injector, Controlveyor, to control the feed of bulk materials or ingredients directly from a main storage facility to process equipment. The Controlveyor system is designed to convey and maintain dosing accuracy up to 650 feet from the storage silo. Contact: Macawber Engineering Inc., Clydesdale Street, Maryville, TN 37801.

# WORKING UNDER PRESSURE!

**SUPERPRESSURE can help solve your pressure problems with our top quality components.**

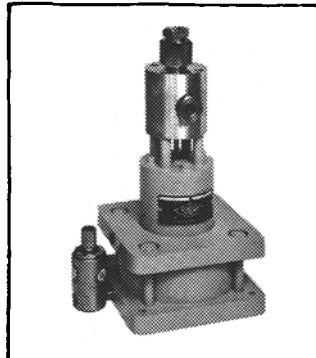
### Supercritical fluid extraction systems

**SUPERCritical FLUID EXTRACTION SYSTEMS**  
Featuring our non-contaminating diaphragm compressor for CO<sub>2</sub> and other gases, in gas or fluid form. For lab/pilot scale extraction of oil from food stuffs, specialty chemicals, etc.

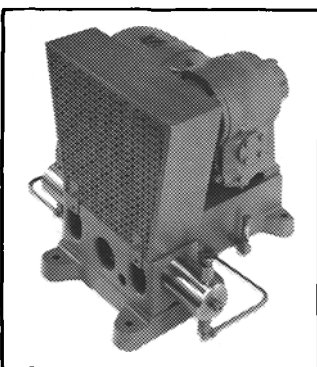


### Pneumatically operated valve.

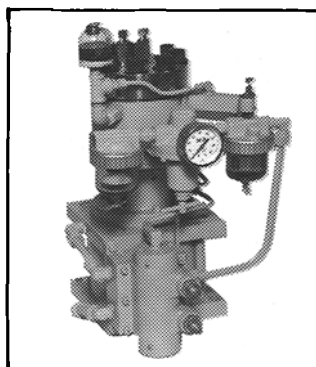
**SUPERPRESSURE VALVE AND FITTINGS** for pressure to 100,000 psi and temperatures to 1000°F include: hand valves • relief valves • check valves • pneumatically operated valves



**PLUNGER PUMPS** for liquid service at 10,000 to 100,000 psi single-end and double-end configurations • hand-operated pumps • air-operated pumps • motor-driven pumps.



**Small volume plunger pump.**



**Single-stage air-operated compressor.**

**LOW-CAPACITY, NON-CONTAMINATING DIAPHRAGM COMPRESSORS** for gas service. (Can be adapted for liquid service.) rated for 10,000 to 30,000 psi • single-end, double-end, and two-stage configurations • hand or air operated compressors • motor-driven compressors

SUPERPRESSURE

**NEWPORT SCIENTIFIC, INC.**

Hygrodynamics

8246-E Sandy Court, Jessup, Maryland 20794-0189 (301) 498-6700

## New Products

### GAS CHROMATOGRAPH

Erba Instruments has introduced a MEGA Series gas chromatograph for high-resolution chromatography. Features include multidetection operation coordinated with five detectors, comprehensive injector/detector systems for packed columns, Grob split/splitless and cold on-column capillary injectors. A modular concept offers users the choice of a microprocessor-based control system or a programmable computer for total automation and data handling. Contact: Tom Jackson, Erba Instruments, 4 Doulton Pl., Peabody, MA 01960.

### DIGITAL THERMOMETERS

Laboratory Equipment Div., United States Testing Co., offers a line of high-accuracy portable digital thermometers ranging from -100 C to +1200 C. Chromel-alumel thermocouple sensors and other accessories can be used in conjunction with the various models to measure temperature in single or multiple locations. Contact: United States Testing Co., Laboratory Equipment Div., 1415 Park Ave., Hoboken, NJ 07030.

### COMPUTER LAB SYSTEM

The CALS Computer Automated Laboratory System from Beckman Instruments offers software for laboratory management, data handling, report, storage and retrieval. CALS acquires data from a wide variety of instrumentation including chromatographs, spectrometers and physical test equipment. It accepts analog or digital outputs or manual entry via CRT terminals. Contact: Beckman Instruments Inc., Laboratory Automation Operations, Box C-19600, Campus Drive at Jamboree Boulevard, Irvine, CA 92713.

### TITRATOR

A Karl Fischer Turbo Titrator for measuring water content in solids and other samples that resist mixing is available from GCA/Precision Scientific Group. The solid-state Turbo Titrator features a 6000 rpm homogenizer to quickly reduce solids to fine particles, which are blended with solvents. Preset homogenizing times range from 1-15 minutes. The instrument can handle samples from 2-250 mg. Contact: John Kohlman, Marketing Dept., GCA/Precision Scientific Group, 3737 W. Cortland St., Chicago, IL 60647.

### CARBOHYDRATE COLUMN

A new carbohydrate column available from IBM Instruments is packed with proprietary 5- $\mu$ m stationary phase. Analyses with the column can be performed at room temperature. Typical applications include quantifying sugars in beverages, food products, cough and cold remedies and analgesics; baseline separating of critical sugars; separating saccharides from polysaccharides; separating polysaccharides; and determining maltose/isomaltose ratios. The 4.5 mm  $\times$  250 mm column can be used with all HPLC instrumentation. Contact: IBM Instruments Inc., Dept. 25, PO Box 3020, Wallingford, CT 06492.



### QUAD-RANGE BALANCE

Brinkmann Instruments' Sartorius electronic quad-range balance Model 1474 MP8 offers a 1620 g capacity with fine reading of 0.01 g. Additional readabilities are 0.02, 0.05 and 0.1 g. Other features include a seven-segment digital display with stabilized readout indicator, display control and an adjustable digital filter. Contact: Brinkmann Instruments Co., Cantiague Road, Westbury, NY 11590.

### FOOD EMULSIFIER

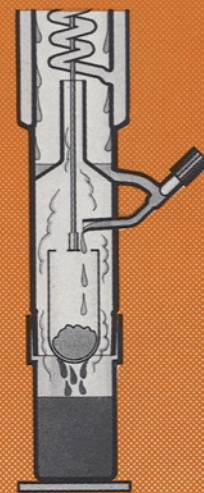
A beaded food emulsifier from Eastman Chemical Products permits bakers to prepare an emulsified oil as needed. Myvatex "Liquid Lite," of vegetable origin, is a combination of propylene glycol monoesters and acetylated glycol monoesters. Contact: Eastman Chemical Products Inc., Chemicals Div., PO Box 431, Kingsport, TN 37662.

### ABSORPTION MONITOR

Knauer's new HPLC absorption monitor is designed for high sensitivity of .001 absorbance units for full-scale recorder deflection. The unit uses a low-pressure mercury lamp with heated cathode and features a microprocessor-controlled auto zero for the sensitivity range. Contact: David A. Keller, Sonntek Inc., PO Box 8731, Woodcliff Lake, NJ 07675.

## FAT ANALYSIS FASTER

The new Soxtec™ HT



### Universality

Extracts compounds from many types of material. Works up to 200° C, enabling most organic solvents to be used.

### Precision

The Soxtec™ principle has proven as accurate and reproducible as Soxhlet.

### Speed

Our patented technique\* reduces extraction time to 20% of the rated Soxhlet time.

### Safety

Evaporation heat is conducted by oil from a separate source.

\* (USP No. 3,798,133)

In the USA, now distributed exclusively by Fisher Scientific Company.

 **tecator**

P.O. Box 405  
Herndon, VA 22070  
(703) 435-3300